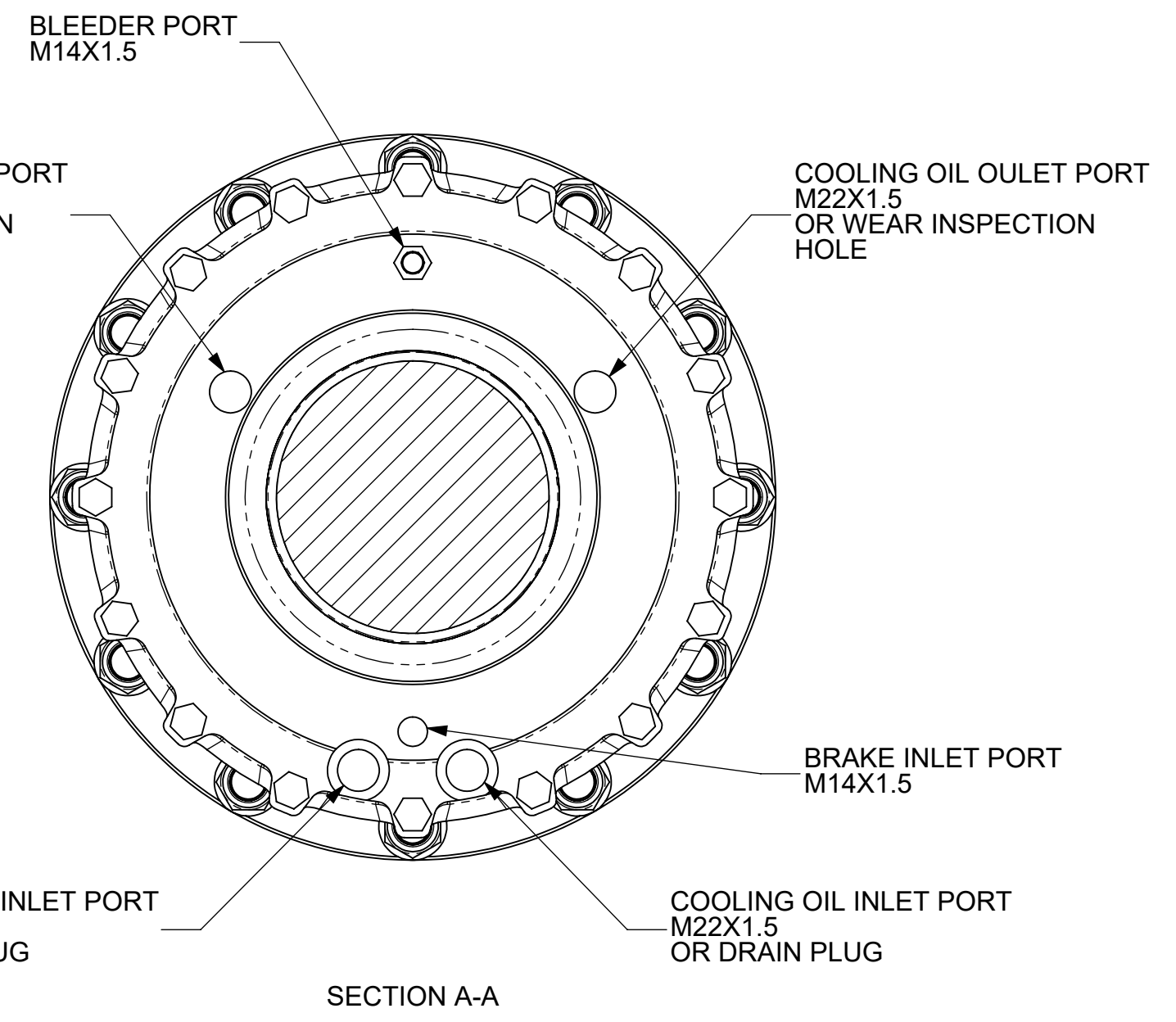
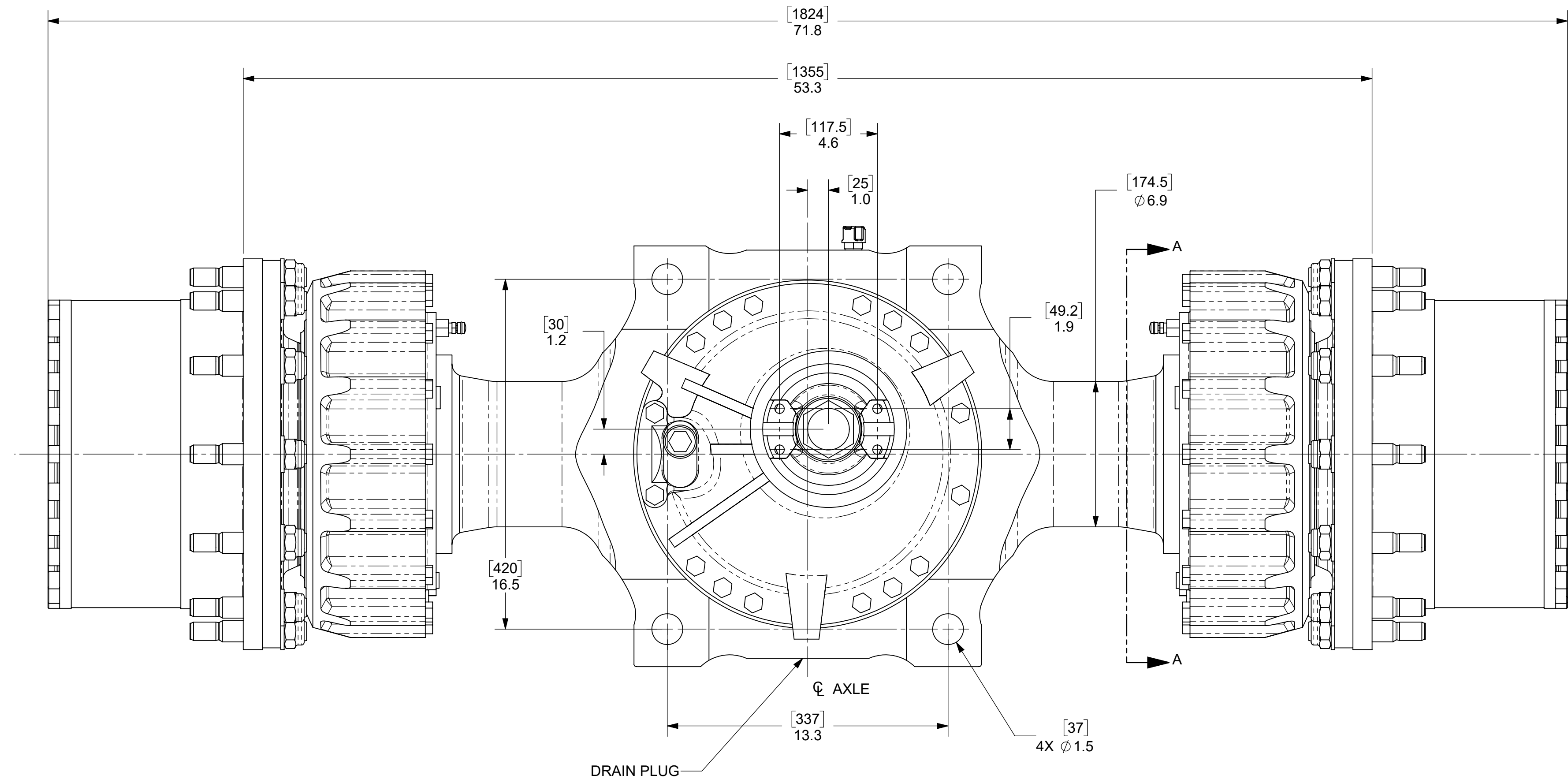


REVISIONS				
ZONE	REV	DESCRIPTION	DATE	APPROVED



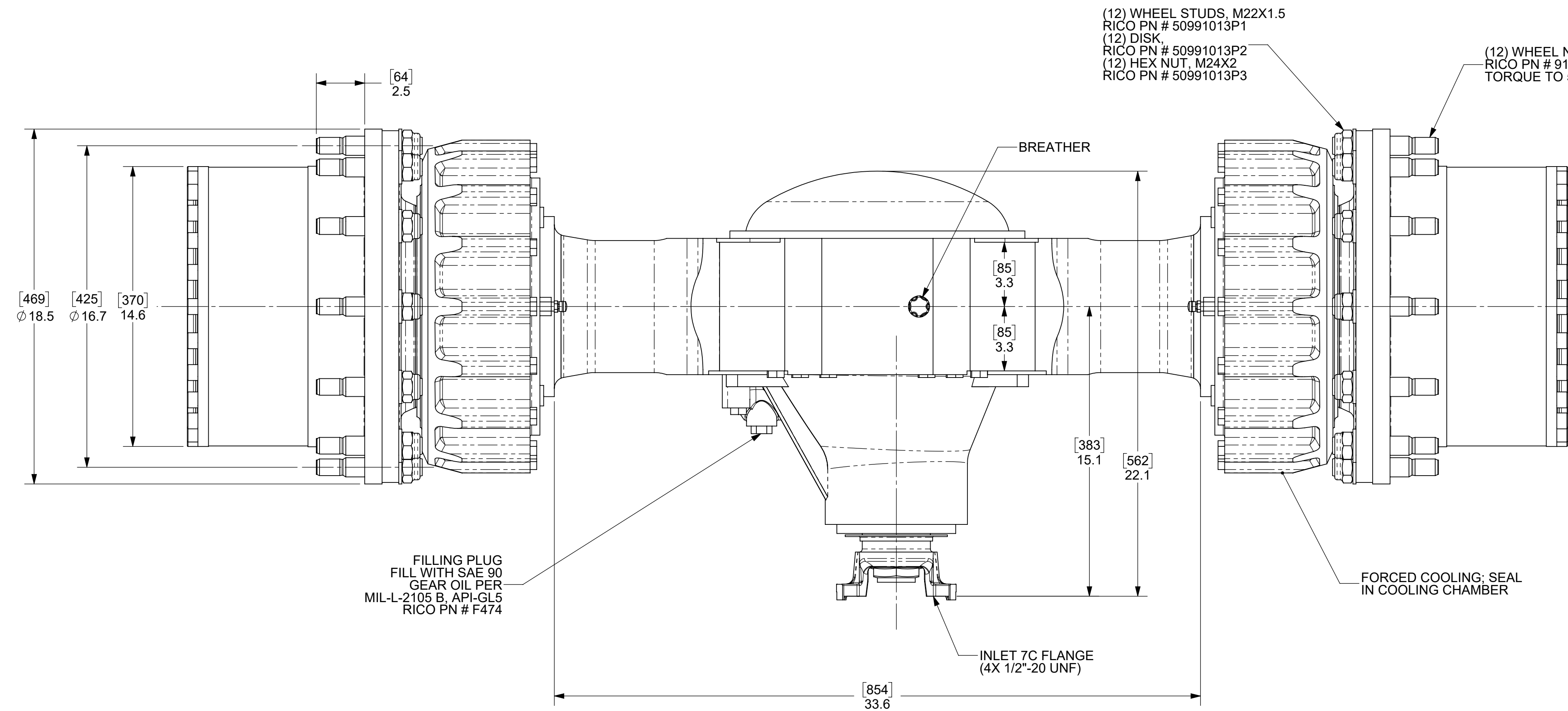
SPECIFICATIONS:
MANUFACTURER: KESSLER & CO.
MANUFACTURER PART NUMBER: 82.9765.3
DESCRIPTION: DRIVE AXLE D81PL489-NLB

MAX AXLE LOAD AT 9 MPH = 80,931 LBS (360,000 N)
MAX STATIC AXLE LOAD = 112,404 LBS (500,000 N)
MAX BRAKING TORQUE PER HUB END = 18,439 FT-LB (25,000 NM)

- THESE AXLES USE THE FOLLOWING KESSLER DATA SHEETS:**
1. WN63201: DISC BRAKE NLB5340
 2. WN85601: NLB PERMISSIBLE OIL
 3. WN85602: NLB PERMISSIBLE OIL
 4. WN17005: USAGE OF AXLES WITH WET BRAKES
 5. WN85603: BRAKE NOISE PREVENTION

IF SUMP BRAKE COOLING IS USED ON RICO PART NUMBER 50991007:

1. REMOVE BOTH INLET AND OUTLET COOLING PORT PLUGS AS SHOWN IN SECTION VIEW (ONLY ONE OF EACH), FROM THE LEFT SIDE BRAKE COOLING CHAMBER.
2. ADD ONE QUART OF HYDRAULIC OIL TO THE LEFT SIDE INLET OIL COOLING PORT. THIS NEEDS TO BE GRAVITY FED.
3. AFTER FILLING ONE QUART OF HYDRAULIC OIL TO THE LEFT SIDE INLET OIL COOLING PORT, RE-INSERT THE PLUG REMOVED. NOTE: SOME OIL WILL LEAK OUT WHICH IS EXPECTED.
4. RE-INSERT THE LEFT SIDE COOLING OIL OUTLET PLUG.
5. REPEAT ABOVE STEPS FOR THE RIGHT SIDE BRAKE COOLING CHAMBER.
6. WIPE ALL SPILLED OIL FROM THE VEHICLE, AND FLOOR IF REQUIRED.



FILLING PLUG
 FILL WITH SAE 90
 GEAR OIL PER
 MIL-L-2105 B, API-GL5
 RICO PN # F474

THIS DOCUMENT CONTAINS PROPRIETARY INFORMATION AND NEITHER IT NOR THE INFORMATION CONTAINED THEREIN SHALL BE DISCLOSED OR DUPLICATED WITHOUT THE EXPRESS WRITTEN CONSENT OF BPR/RICO MFG. INC.		MFG PROCESS	RICO	
PURCH		TEMP FOR GENERAL MFG PROCESSES		
TITLE		DRAWING NUMBER		REV LEVEL
DRIVE AXLE		50991016		A
SCALE 1:4		WEIGHT 2898.5 LB	SHEET 10F1	