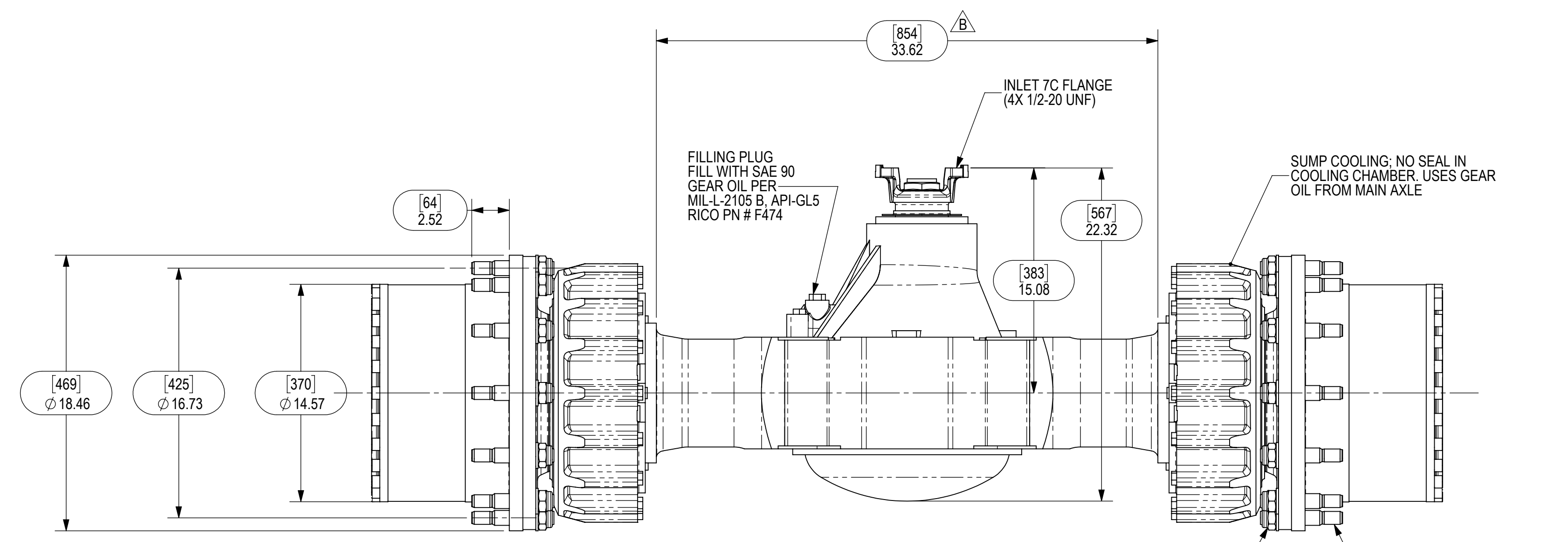
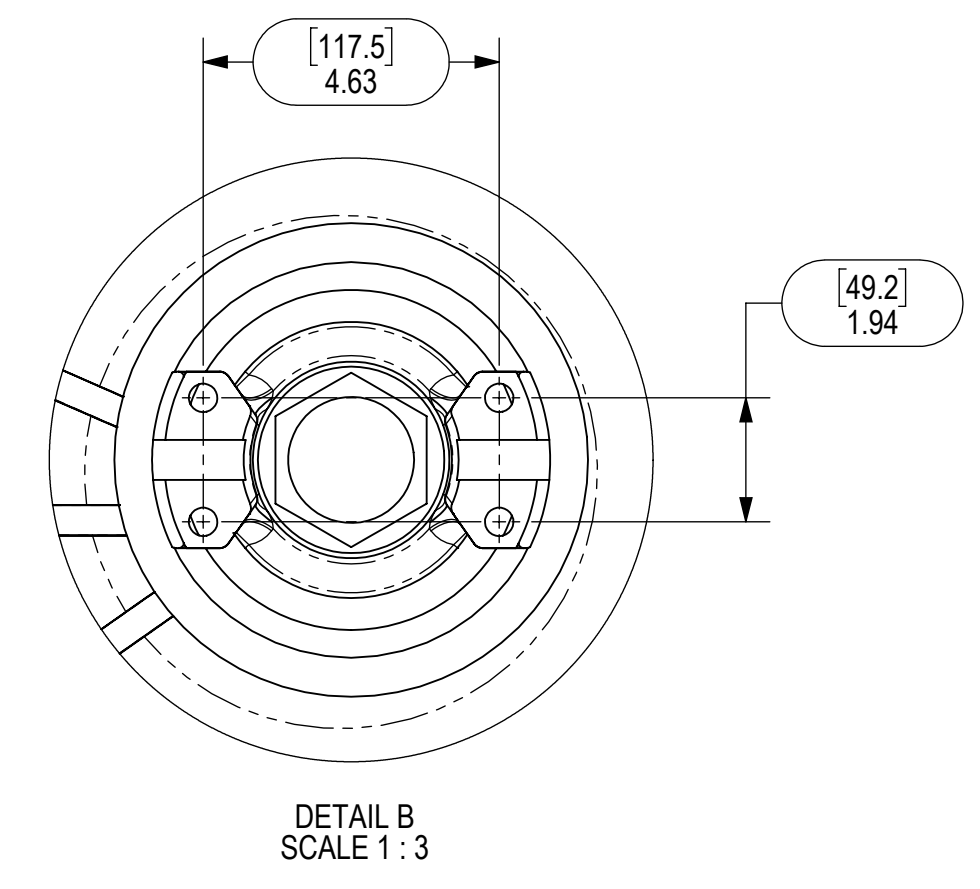
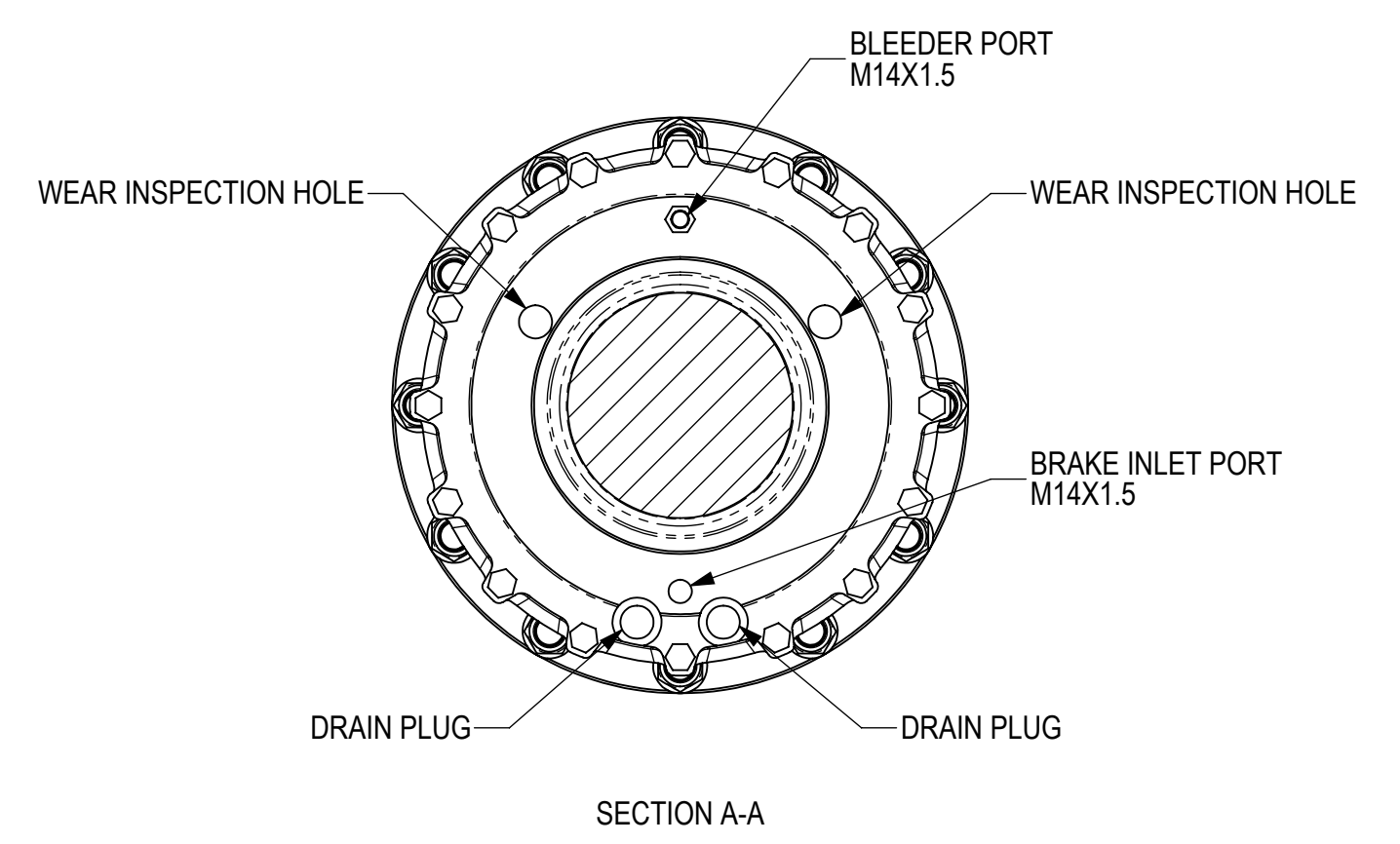
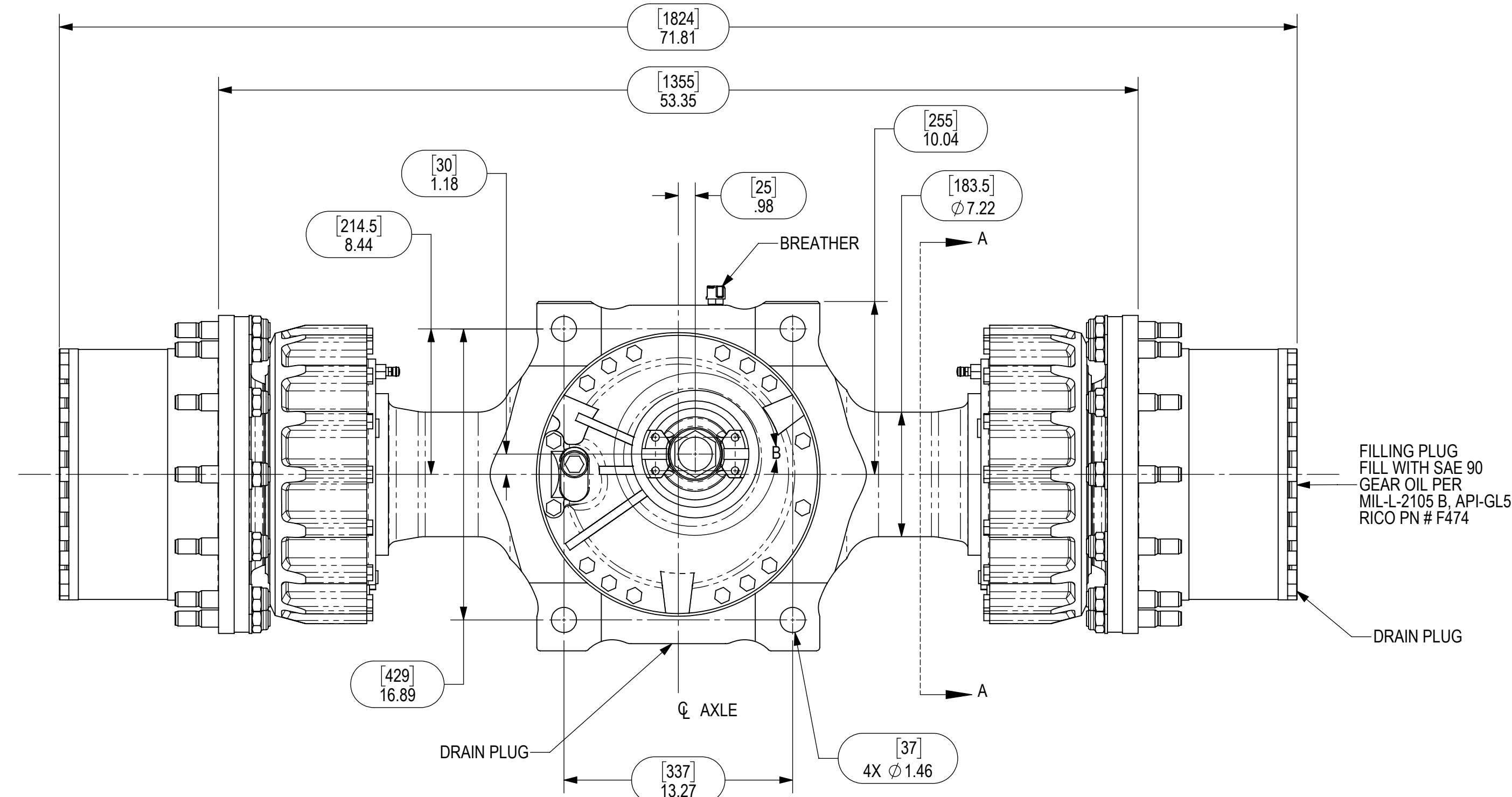


REVISIONS					
ZONE	REV	ECN	DESCRIPTION	DATE	APPROVED
	A		KESSLER PART NUMBER WAS 92.9344.3	1/8/2018	SMB
C6	B		854MM WAS 870MM; UPDATED TITLEBLOCK	4/15/2019	ELL



- (12) WHEEL STUDS, M22X1.5 RICO PN # 50991013P1
- (12) DISK, RICO PN # 50991013P2
- (12) HEX NUT, M24X2 RICO PN # 50991013P3
- (12) WHEEL NUTS, M22X1.5 RICO PN # 914619P2 TORQUE TO 480 FT-LBS

NOTE: THE SEAL(S) SEPERATING THE BRAKE CHAMBER FROM THE MAIN AXLE CHAMBER HAVE BEEN REMOVED. THEREFORE, THIS AXLE IS STRICTLY A "SUMP COOLING" AXLE ONLY, AND CAN NOT HAVE FORCE COOLING. THE COOLING PORTS ON THE AXLE CAN NOT BE USED.

NOTE: MANUFACTURER DRAWING PROVIDED ON SHEET 2 FOR REFERENCE ONLY.

THESE AXLES USE THE FOLLOWING KESSLER DATA SHEETS:

- WN63201: DISC BRAKE NLB5340
- WN85601: NLB PERMISSIBLE OIL
- WN85602: NLB PERMISSIBLE OIL
- WN17005: USAGE OF AXLES WITH WET BRAKES
- WN85603: BRAKE NOISE PREVENTION

SUPPLIER SPECIFICATIONS	
SUPPLIER	KESSLER & CO.
SUPPLIER PART NUMBER	82.93443
SUPPLIER PART DESCRIPTION	DRIVE AXLE D81PL489-NLB
MAX AXLE LOAD @ 7 MPH	89,923 LBS (400,000 N)
MAX STATIC AXLE LOAD	112,404 LBS (500,000 N)
MAX BRAKING TORQUE PER HUB	18,440 FT-LBS (25,000 NM)
RATIO	30.75:1

RECEIVING INSPECTION SYMBOLS:
 (XX) INSPECT DISTANCE USING MEASURING INSTRUMENT.
 VISUALLY INSPECT NOTED FEATURE.

UNLESS OTHERWISE SPECIFIED:
 • DIMENSIONS ARE IN INCHES.
 • INTERPRET DIMENSIONS AND TOLERANCES PER ASME Y14.5-2009.
 • UNTOLERANCED DIMENSIONS ARE FOR REFERENCE PURPOSES ONLY.

CONFIDENTIAL AND PROPRIETARY:
 THIS DRAWING SHALL NOT BE DISCLOSED OR DUPLICATED WITHOUT THE EXPRESS WRITTEN CONSENT OF BPR-RICO MANUFACTURING, INC.

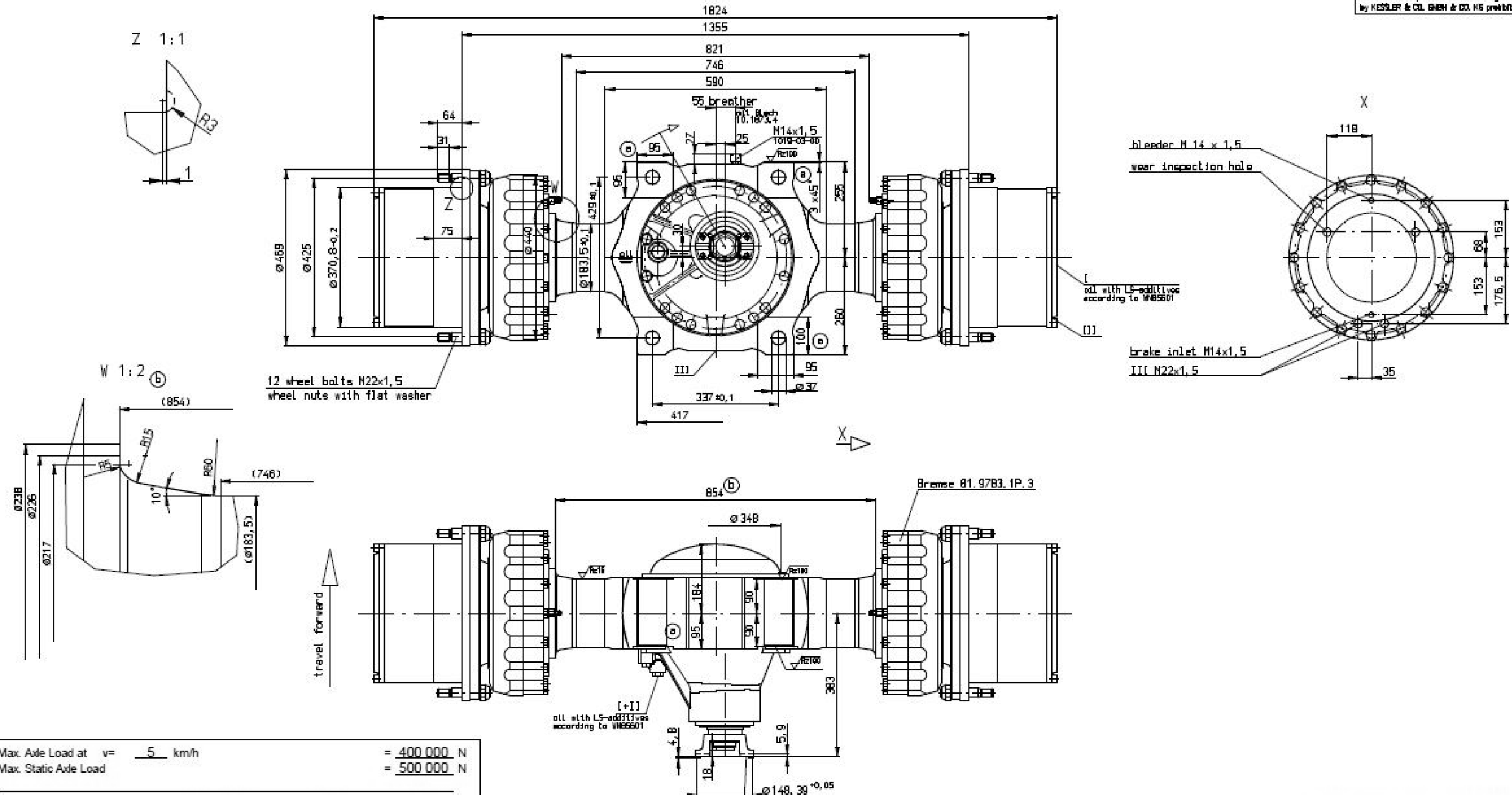


ENGINEER: SMB
 DRAWN BY: SMB
 DATE: 9/16/2020
 THIRD PARTY APPROVAL: NONE

TITLE: DRIVE AXLE	DWG NO: 50991014	CAGE:
STATUS: ACTIVE	UNIT OF MEASURE: EA	SCALE: 1:6
PROCESS: PURCH	WEIGHT (LB): 2160.0	REV: B
SOURCE: PURCHASE		SHEET: 1 OF 2

THIRD ANGLE PROJECTION

MATL QTY: MATL NO:
 MATL DESC:



Max. Axle Load at $v = 5$ km/h = 400 000 N
 Max. Static Axle Load = 500 000 N

Ratio ($i_v = -$ $i_a = 5,125$ $i_g = 6,0$) = 30,75

Brake Wet disc brake NLB5340 without external cooling
 Char. data sheet WN 63201/ WN85601

Max. Braking Torque per Hub End at max. line pressure 104 bar = 25.000 Nm
 Operation mineral oil Lining -

Parking Brake - Braking Torque = - Nm
 Operation -

Tire Size	28"x24"	-	-	-
Rim	-	-	-	-
Offset	0	-	-	-

Lubrication Hypoid Gear Oil SAE 90 per MIL-L-2105 B, API-GL5
 Oil quantity ca. Drive Assembly - I Hub Assembly - I
 Drop Gear - I
 I= Filling Plug II= Spill Plug III= Drain Plug IV= Grease Nipple

Weight ca. - kg

d	c	b	a	Ind. No.	Revision	No.	Date	Name
		2	4					
					854; detail W added	36503	26.02.2018	Fischer
					chamfer 3x45° added; axle housing modified, 95 [80], 100 [85];	36340	03.01.2018	Kohn

Achse ist vom Kunden mit Öl gemäß WN85601 zu befüllen.
 Radmuttern lose mitgeliefert

*) not included in scope of supply
 Axle must be filled with oil by the customer according to WN85601.
 wheel nuts shipped separately

	Scale:	1:10
	Date	08.05.2017
	Name	Drescher
Design	Kohn	
Check	Kohn	

Description:
 Drive Axle D81PL489-NLB

KESSLER+CO
 © Kessler & Co. GmbH & Co. KG Axles + Gear Boxes

Drawing-No.: 82.9344.3b
 Sheet 1/1