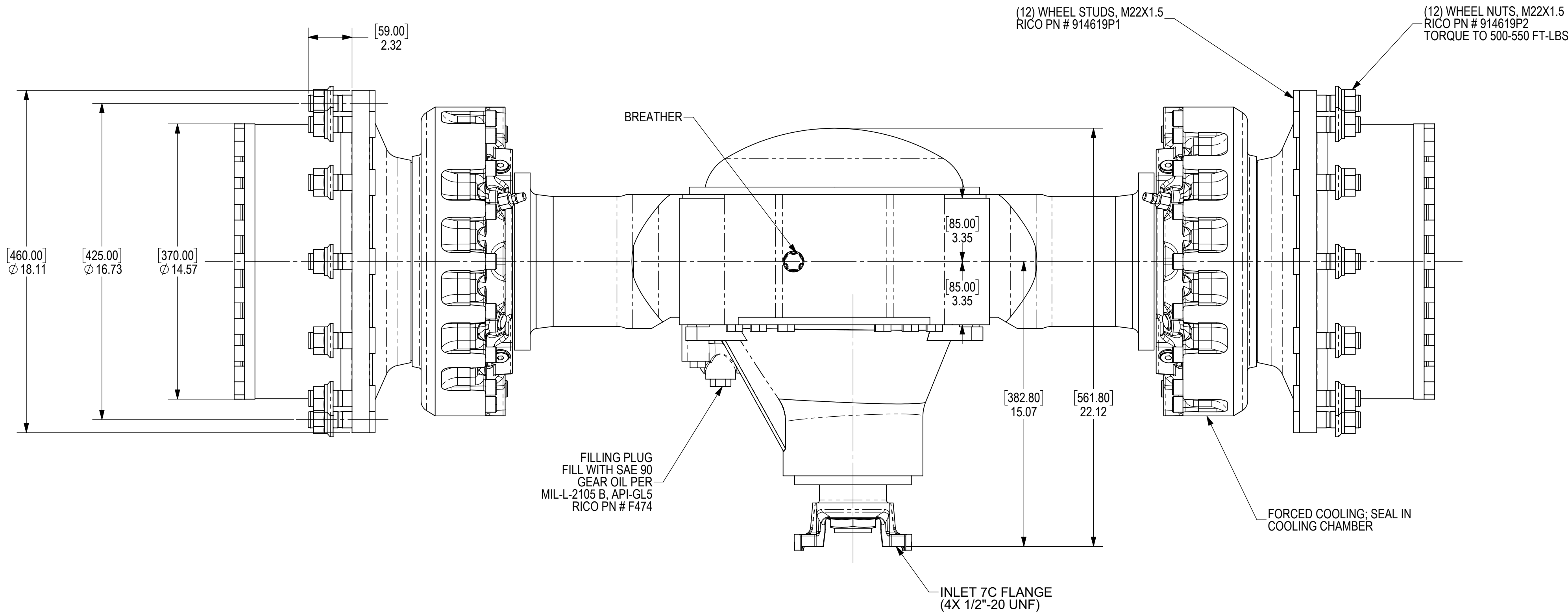
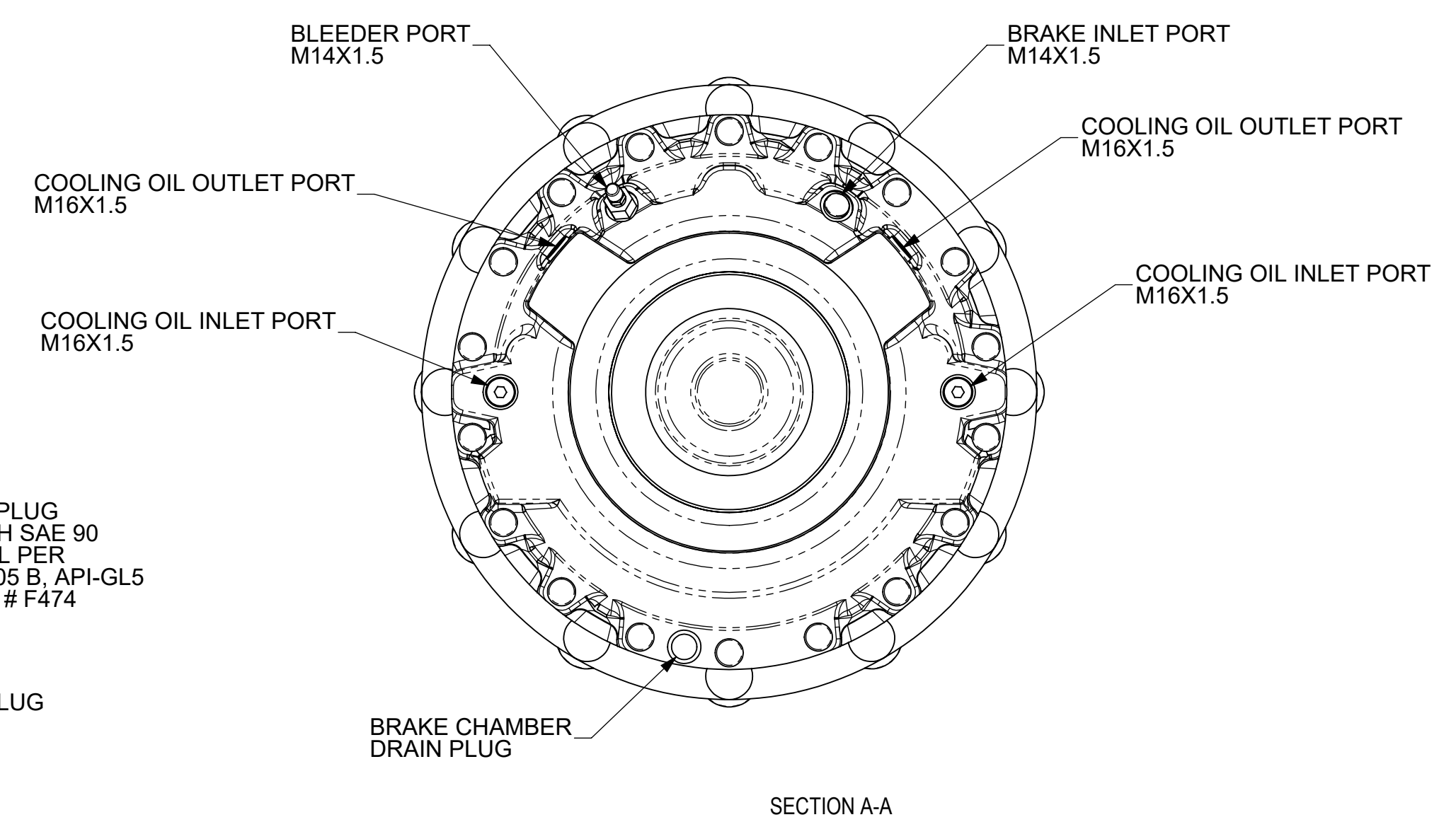
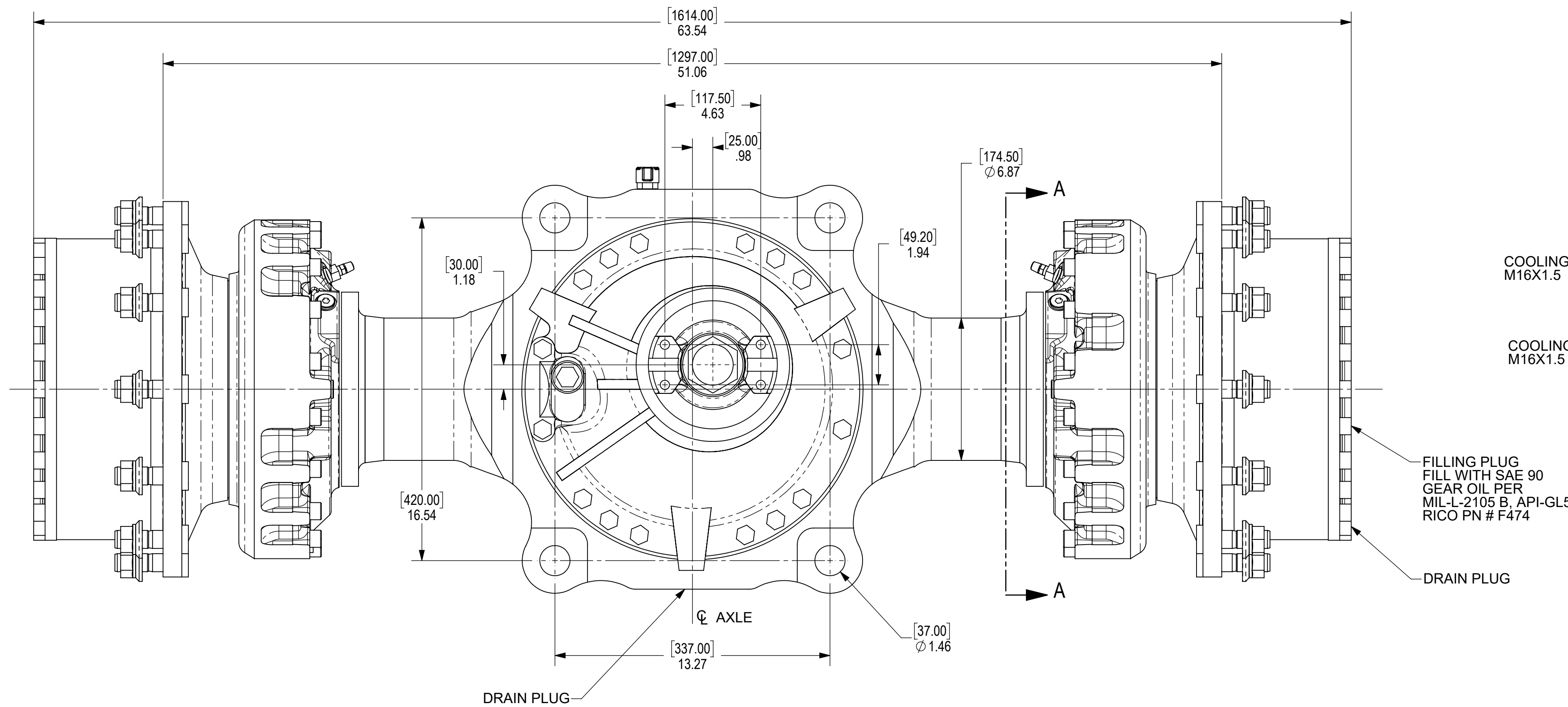


REVISIONS					
ZONE	REV	ECN	DESCRIPTION	DATE	APPROVED
	A		UPDATED FORMAT	5/2/2023	ANS



**SPECIFICATIONS:**  
**MANUFACTURER:** KESSLER & CO.  
**MANUFACTURER PART NUMBER:** 82.8275.3  
**DESCRIPTION:** DRIVE AXLE D81PL489-NLB

**MAX AXLE LOAD AT 9 MPH = 67,442 LBS (300,000 N)**  
**MAX STATIC AXLE LOAD = 112,404 LBS (500,000 N)**  
**MAX BRAKING TORQUE PER HUB END = 12,907 FT-LB (17,500 NM)**

- THESE AXLES USE THE FOLLOWING KESSLER DATA SHEETS:**
- WN63270: DISC BRAKE NLB3340-3
  - WN85601: NLB PERMISSIBLE OIL
  - WN85602: NLB PERMISSIBLE OIL
  - WN17005: USAGE OF AXLES WITH WET BRAKES
  - WN85603: BRAKE NOISE PREVENTION

**IF SUMP BRAKE COOLING IS USED ON RICO PART NUMBER 50991007:**

- REMOVE BOTH INLET AND OUTLET COOLING PORT PLUGS AS SHOWN IN SECTION VIEW (ONLY ONE OF EACH), FROM THE LEFT SIDE BRAKE COOLING CHAMBER.
- ADD ONE QUART OF HYDRAULIC OIL TO THE LEFT SIDE INLET OIL COOLING PORT. THIS NEEDS TO BE GRAVITY FED.
- AFTER FILLING ONE QUART OF HYDRAULIC OIL TO THE LEFT SIDE INLET OIL COOLING PORT, RE-INSERT THE PLUG REMOVED.  
NOTE: SOME OIL WILL LEAK OUT WHICH IS EXPECTED.
- RE-INSERT THE LEFT SIDE COOLING OIL OUTLET PLUG.
- REPEAT ABOVE STEPS FOR THE RIGHT SIDE BRAKE COOLING CHAMBER.
- WIPE ALL SPILLED OIL FROM THE VEHICLE, AND FLOOR IF REQUIRED.

**ASSY TOLERANCES:**

.X	± .250"
.XX	± .125"
.XXX	± .063"
ANGULAR	± 1°
WEIGHT	± 15%

**UNLESS OTHERWISE SPECIFIED:**

- DIMENSIONS ARE IN INCHES.
- INTERPRET DIM & TOL BY ASME Y14.5-2009.
- REMOVE ALL BURRS AND BREAK SHARP EDGES WHICH POSE A CUTTING HAZARD DURING OPERATION OR MAINTENANCE.

**RICO** Life Time

WWW.RICOEQUIPMENT.COM  
 691 WEST LIBERTY ST.  
 MEDINA, OHIO 44256  
 BPR-RICO MANUFACTURING, INC.

THIS DRAWING CONTAINS CONFIDENTIAL AND PROPRIETARY INFORMATION OF BPR-RICO MANUFACTURING, INC. NEITHER IT NOR THE INFORMATION CONTAINED HEREIN SHALL BE DISCLOSED TO OTHERS OR DUPLICATED WITHOUT THE EXPRESS WRITTEN CONSENT OF BPR-RICO MANUFACTURING, INC.

<b>PART NUMBER:</b> 50991007		<b>DESCRIPTION:</b> DRIVE AXLE			<b>REV:</b> A
<b>PREVIOUS STEP:</b>	<b>ENGINEER:</b> RLL	<b>ALT ITEM:</b>	<b>STATUS:</b> ACTIVE	<b>CAGE CODE:</b>	
<b>RAW MATL PN:</b>	<b>DRAWN BY:</b> ELL	<b>3RD PTY APPVL:</b> NONE	<b>WEIGHT:</b> 1200.0 (LB)	<b>SIZE:</b> D	
<b>RAW MATL QTY:</b>	<b>DATE:</b> 9/16/2020	<b>UOM:</b> EA <b>PRCS:</b> PURCH	<b>THIRD ANGLE PROJECTION</b>	<b>SCALE:</b> 1:4	
<b>RAW MATL DESC:</b>		<b>INITIAL SN:</b>		<b>SHEET:</b> 1 OF 1	