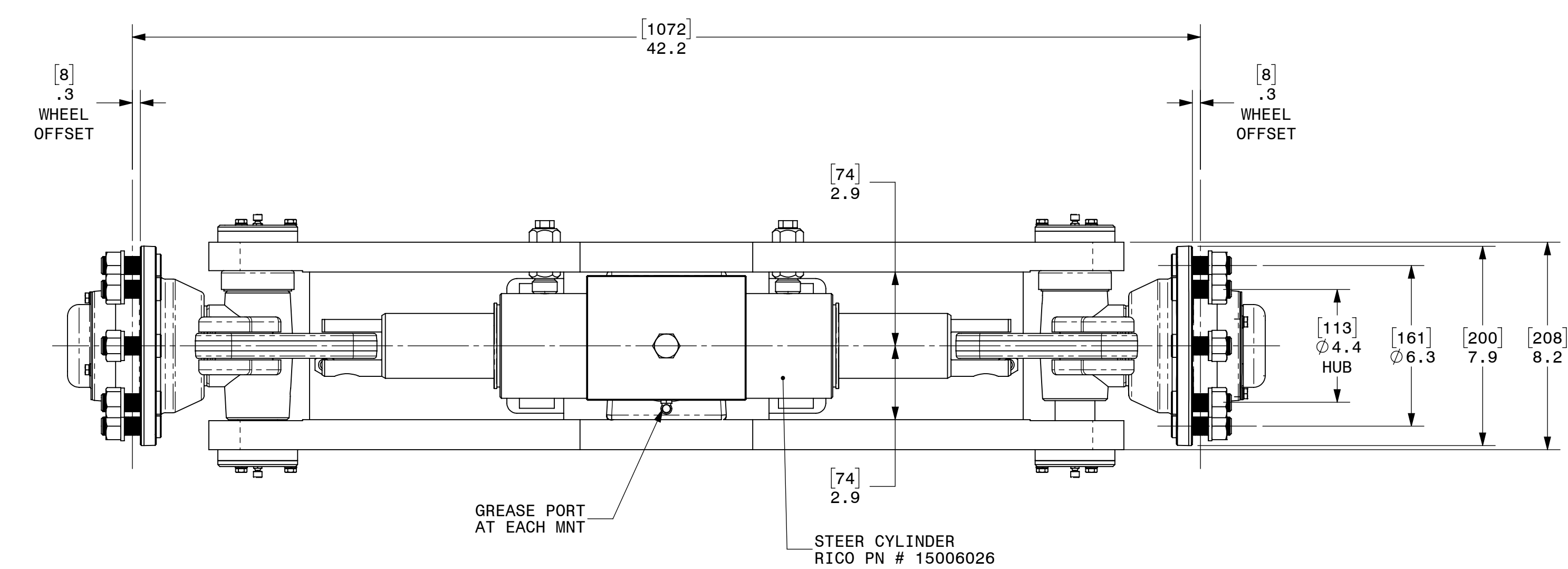
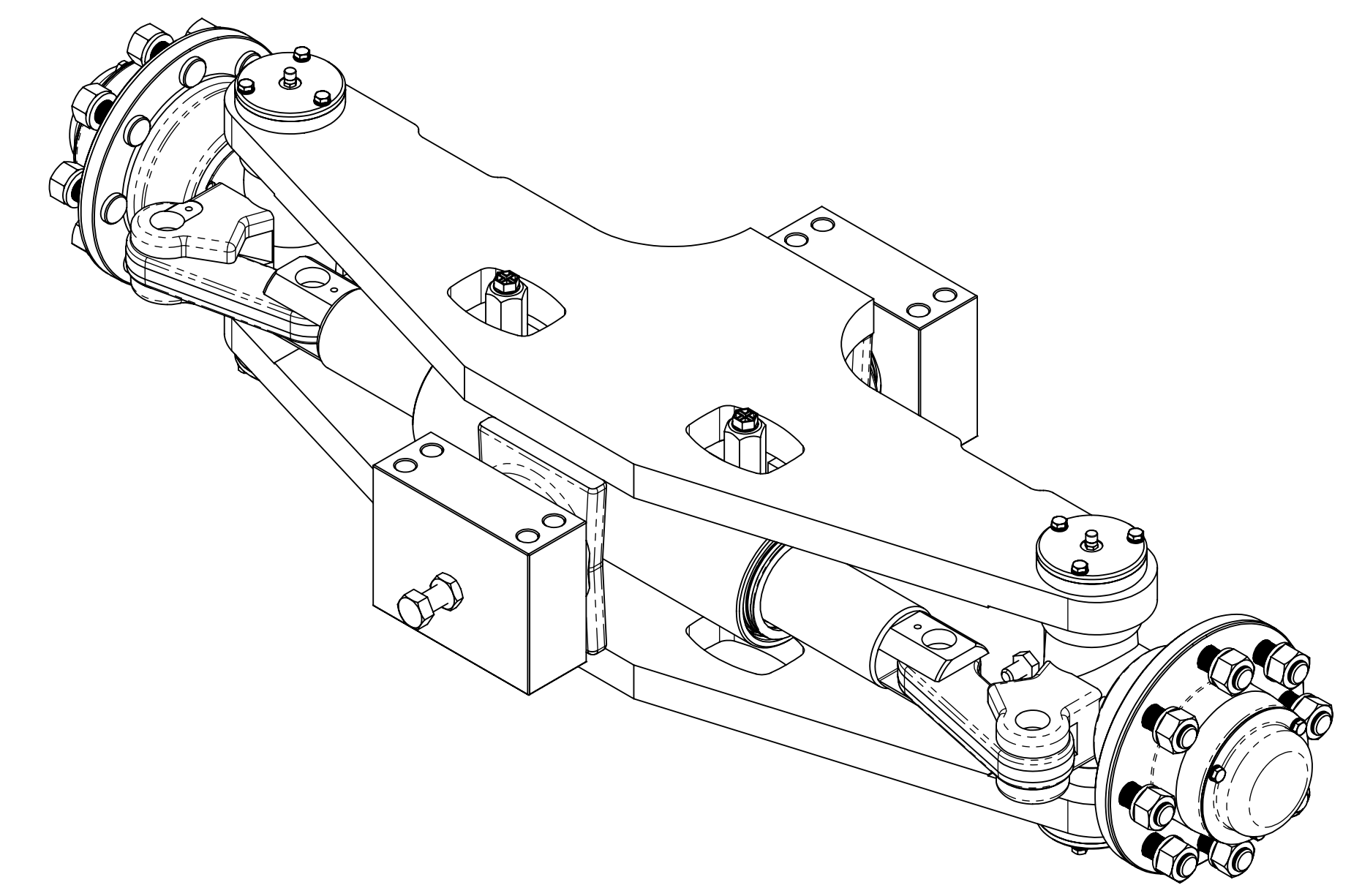
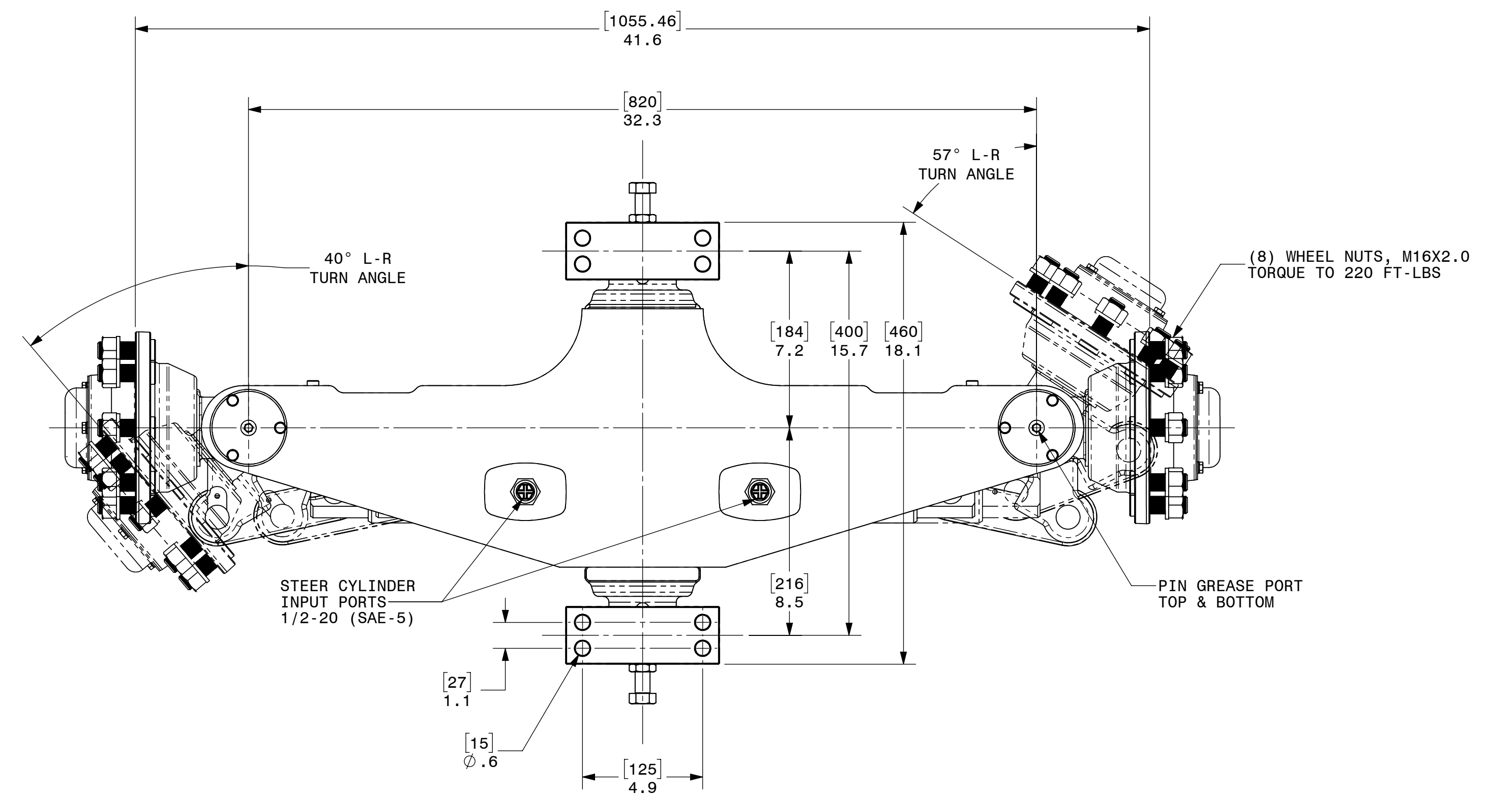


REVISIONS				
ZONE	REV	DESCRIPTION	DATE	APPROVED



SPECIFICATIONS:
 MANUFACTURER: BORGHI ASSALI
 MANUFACTURER PART NUMBER: 845010000
 DESCRIPTION: 11,000 LB CAPACITY STEER AXLE

MAX AXLE LOAD AT 15 MPH = 11,000 LBS (5.5 TON)
 STEER CYLINDER BORE: 3.54" (90MM)
 STEER CYLINDER ROD: 2.56" (65MM)
 STEER CYLINDER STROKE: 5.35" (136MM)
 STEER CYLINDER OIL VOLUME: 413CC

UOS, DIM ARE IN INCHES. .X ± .1 .XX ± .04 .XXX ± .010 ANGULAR ± 1° INTERPRET DIM AND TOL PER ASME Y14.5-2009.	THIS DOCUMENT CONTAINS PROPRIETARY INFORMATION AND NEITHER IT NOR THE INFORMATION CONTAINED THEREIN SHALL BE DISCLOSED OR DUPLICATED WITHOUT THE EXPRESS WRITTEN CONSENT OF BPR/RICO MFG INC.		MFG PROCESS PURCH	
	THIRD ANGLE PROJECTION 	DRAWN BY ZN	ENGINEER ZN	
	SCALE 1:4	DRAWING NUMBER 15006014	REV LEVEL SHEET 10F1	