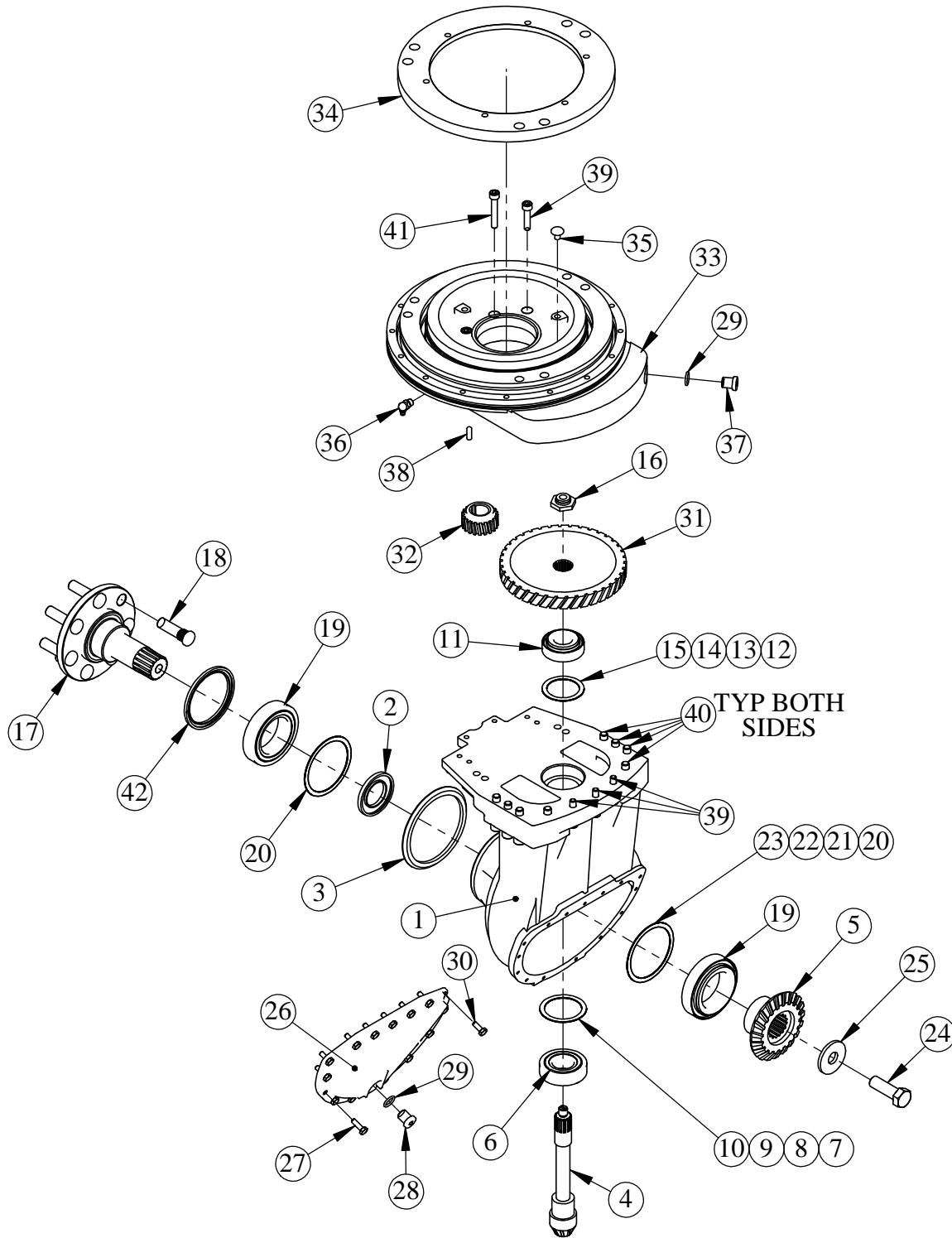


REVISIONS				
ZONE	REV.	DESCRIPTION	DATE	APPV



This drawing contains proprietary information. This drawing or any part of it shall not be reproduced in any manner except as authorized in writing.	TOLERANCES (EXCEPT AS NOTED)	RICO		
	DECIMAL			TRANSMISSION ASSY
	.X ±.1" .XX ±.04" .XXX ±.010"	DRAWN BY	SCALE 1:8	
SHEET 1 OF 2	SIZE: A	CHK'D	SERIAL NO.	19.9:1-25mm
	ANGULAR ±1°	DATE 9/30/2003	600FE	

ITEM NO.	QTY.	PART NO.	DESCRIPTION
	1	15005110	Transmission Assembly
1	1	15005657	TRANS LOWER HOUSING
2	1	15005693	SEALING RING
3	1	15005658	THREAD SHIELD
4	1	15005655	BEVEL GEAR SET - (Part 1 of 2)
5	1	N/A	BEVEL GEAR SET - (Part 2 of 2)
6	1	15005710	TAPERED RLR BRG, SET (incl. Cup & Cone)
7	1	15005489	SHIM, 0.10mm
8	1	15005490	SHIM, 0.15mm
9	1	15005491	SHIM, 0.30mm
10	1	15005492	SHIM, 0.50mm
11	1	26031152	TAPERED RLR BRG, SET (incl. Cup & Cone)
12	1	15005500	SHIM, 0.10mm
13	1	15005482	SHIM, 0.15mm
14	1	15005483	SHIM, 0.30mm
15	1	XXXXXXXX	SHIM, 0.50mm (NOT AVAILABLE)
16	1	15005653	HEX NUT - TRANS SHAFT
17	1	15005656	WHEEL SHAFT, 600
18	12	15005520	WHEEL BOLT
19	2	15005522	TAPERED RLR BRG, SET (incl. Cup & Cone)
20	2	15005493	SHIM, 0.10mm
21	2	15005494	SHIM, 0.15mm
22	2	15005495	SHIM, 0.30mm
23	2	15005496	SHIM, 0.50mm
24	1	15005653	HEX NUT (BOLT SHOWN - 600 USES NUT)
25	1	15005484	SHIMS 15005486 / 15005487 / 15005488
26	1	15005652	COVER LID
27	13	15005481	HEX SCREW
28	1	15005696	PLUG w/MAGNET
29	2	15005537	SEALING RING
30	2	15005481	HEX SCREW
31	1	15005661	*** CYLINDRICAL GEAR
32	1	15005660	*** DRIVE PINION GEAR
33	1	XXXXXXXX	TRANS UPPER HOUSING (CONTACT FACTORY)
34	1	15005664	CENTERING RING
35	1	15005540	BREATHER VALVE
36	2	15005679	BALL-TYPE GREASE NIPPLE
37	1	15005536	THREADED PLUG
38	2	15005667	PARALLEL PIN
39	7	15005668	SOCKET HEAD SCREW, M8x35
40	8	15005669	SOCKET HEAD SCREW
41	6	15005497	SOCKET HEAD SCREW
42	1	15005647	SEALING RING

PARTS MARKED *** MUST BE PURCHASED SEPARATELY.
NOTE: ALL SHIMS ARE USED "AS REQUIRED".

This drawing contains proprietary information. This drawing or any part of it shall not be reproduced in any manner except as authorized in writing.	TOLERANCES (EXCEPT AS NOTED)		RICO	
	DECIMAL			
	.X ±.1"		DRAWN BY	SCALE
	.XX ±.04"		CHK'D	1:5
.XXX ±.010"		DATE	SERIAL NO.	NEXT ASSEMBLY 19.9:1-25mm
SIZE: A		9/30/2003	600FE	
ANGULAR ±1°		SHEET 2 of 2		