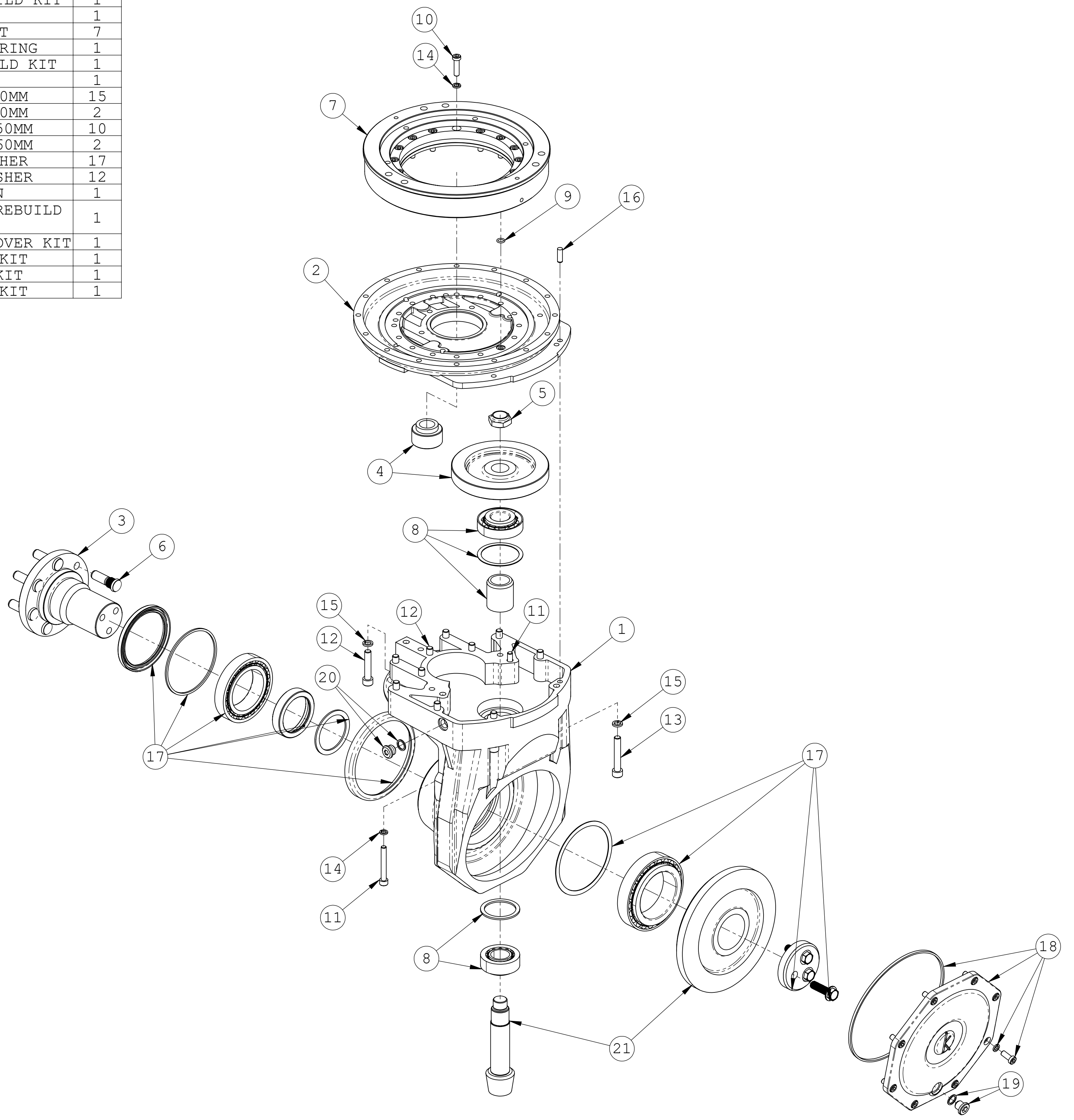


ITEM NO	PART NUMBER	DESCRIPTION	QTY
1	15001632	GEARBOX HOUSING	1
2	15001640	TOP GEARBOX COVER	1
3	15001656	AXLE SHAFT	1
4	15001718	SPUR GEAR REBUILD KIT	1
5	150016A4	HEX NUT	1
6	150016A6	WHEEL BOLT	7
7	150016D1	STEERING BEARING	1
8	15001719	BEARING REBUILD KIT	1
9	15001657	O-RING	1
10	H1880	SHCS M8 X 30MM	15
11	15001678	SHCS M8 X 60MM	2
12	H273	SHCS M10 X 50MM	10
13	H1877	SHCS M10 X 60MM	2
14	H1885	8MM LOCKWASHER	17
15	H1886	10MM LOCKWASHER	12
16	150016A3	DOWEL PIN	1
17	150016D4	LOWER GEARBOX REBUILD KIT	1
18	150016D5	LOWER GEARBOX COVER KIT	1
19	150016D6	DRAIN PLUG KIT	1
20	150016D7	FILL PLUG KIT	1
21	15001670	BEVEL GEAR KIT	1

REVISIONS				
ZONE	REV.	DESCRIPTION	DATE	APPROVED
	A	UPDATED TITLE BLOCK FOR CURRENT STANDARDS	9/10/2021	AJB



D

D

C

C

B

B

A

A

PRCS: PURCH	PREVIOUS STEP:	TRANSMISSION		
RAW MATL PN:	RAW MATL QTY:			
RAW MATL DESC:				
UNLESS OTHERWISE SPECIFIED DIMENSIONS ARE GIVEN IN INCHES.		DISTANCE TOLERANCES: ANGULAR TOLERANCE: X ± .1" ±1" .XX ± .04" FRACTIONAL TOLERANCE: .XXX ± .010" ±1/8"		
This drawing contains proprietary information. This drawing or any part of it shall not be reproduced in any manner except as authorized in writing.		THIRD ANGLE PROJECTION 	SIZE D	PROCESS DWG NO. 15001602
SCALE 1:4		DRAWN BY AAS	DATE 08/24/2020	SHEET 1 OF 1